



Claudin-10 Polyclonal Antibody

Catalog No	YP-Ab-16953
Isotype	IgG
Reactivity	Human; Mouse; Rat
Applications	WB;IHC;IF;ELISA
Gene Name	CLDN10
Protein Name	Claudin-10
Immunogen	The antiserum was produced against synthesized peptide derived from human Claudin 10. AA range:179-228
Specificity	Claudin-10 Polyclonal Antibody detects endogenous levels of Claudin-10 protein.
Formulation	Liquid in PBS containing 50% glycerol, 0.5% BSA and 0.02% sodium azide.
Source	Polyclonal, Rabbit,IgG
Purification	The antibody was affinity-purified from rabbit antiserum by affinity-chromatography using epitope-specific immunogen.
Dilution	Western Blot: 1/500 - 1/2000. Immunohistochemistry: 1/100 - 1/300. Immunofluorescence: 1/200 - 1/1000. ELISA: 1/10000. Not yet tested in other applications.
Concentration	1 mg/ml
Purity	≥90%
Storage Stability	-20°C/1 year
Synonyms	CLDN10; Claudin-10; OSP-like protein
Observed Band	25kD
Cell Pathway	Cell junction, tight junction . Cell membrane ; Multi-pass membrane protein .
Tissue Specificity	Expressed in the kidney, eccrine sweat glands and in all layers of the epidermis. In the kidney, it is detected in the thick ascending limb of Henle's loop (TAL) (PubMed:28771254, PubMed:28686597). In the sweat glands, it is expressed in cells from secretory portions, corresponding to the clear cells (PubMed:28686597).
Function	function:Plays a major role in tight junction-specific obliteration of the intercellular space, through calcium-independent cell-adhesion activity.,similarity:Belongs to the claudin family.,
Background	This gene encodes a member of the claudin family. Claudins are integral membrane proteins and components of tight junction strands. Tight junction strands serve as a physical barrier to prevent solutes and water from passing freely through the paracellular space between epithelial or endothelial cell sheets, and also play critical roles in maintaining cell polarity and signal transductions. The expression level of this gene is associated with recurrence of primary hepatocellular carcinoma. Six alternatively spliced transcript variants encoding



different isoforms have been reported, but the transcript sequences of some variants are not determined.[provided by RefSeq, Jun 2010],

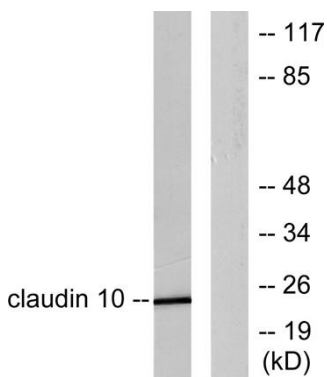
matters needing attention

Avoid repeated freezing and thawing!

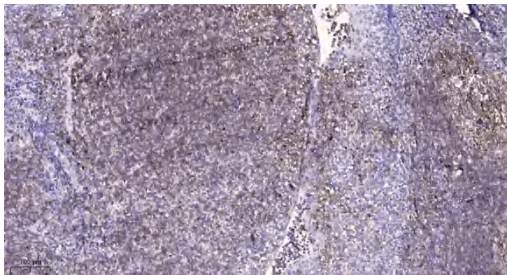
Usage suggestions

This product can be used in immunological reaction related experiments. For more information, please consult technical personnel.

Products Images



Western blot analysis of lysates from LOVO cells, using Claudin 10 Antibody. The lane on the right is blocked with the synthesized peptide.



Immunohistochemical analysis of paraffin-embedded human tonsil. 1, Antibody was diluted at 1:200(4° overnight). 2, Tris-EDTA,pH9.0 was used for antigen retrieval. 3,Secondary antibody was diluted at 1:200(room temperature, 45min).